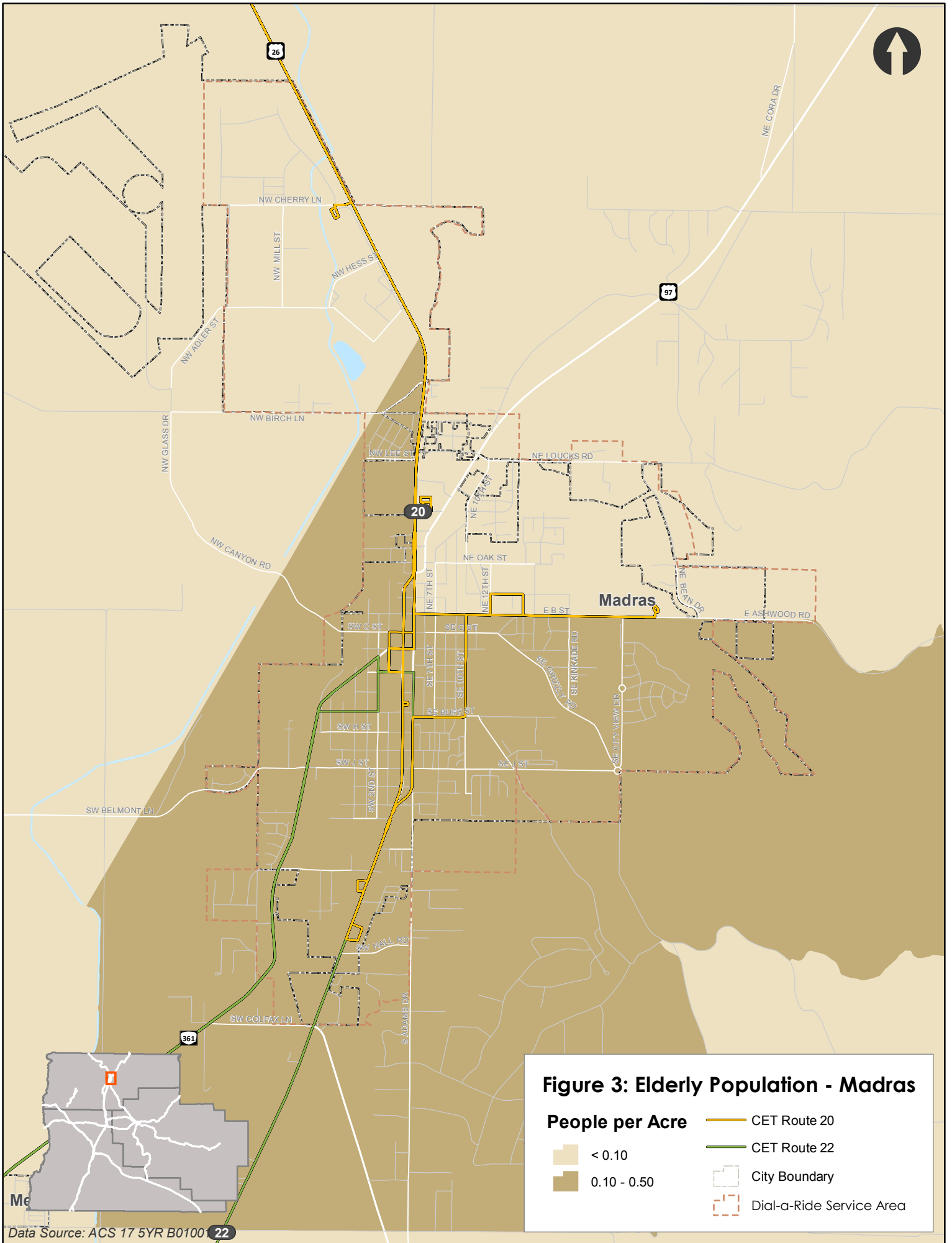
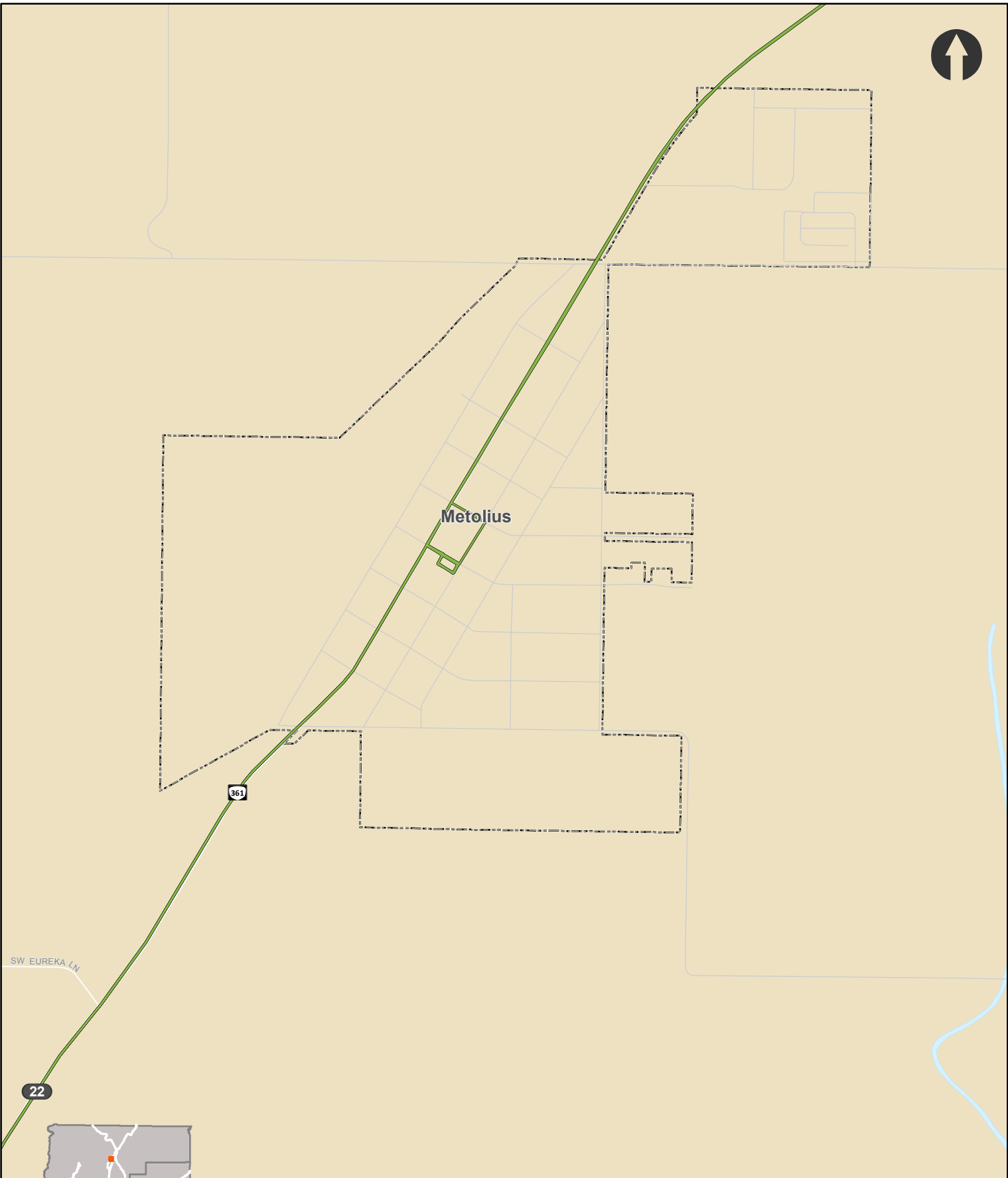


Figure 3: Elderly Population - Warm Springs

People per Acre — CET Route 20
 < 0.10 - - - City Boundary

Data Source: ACS 17 5YR B01001





Metolius

361

SW EUREKA LN

22

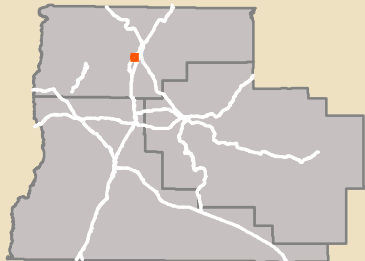


Figure 3: Elderly Population - Metolius

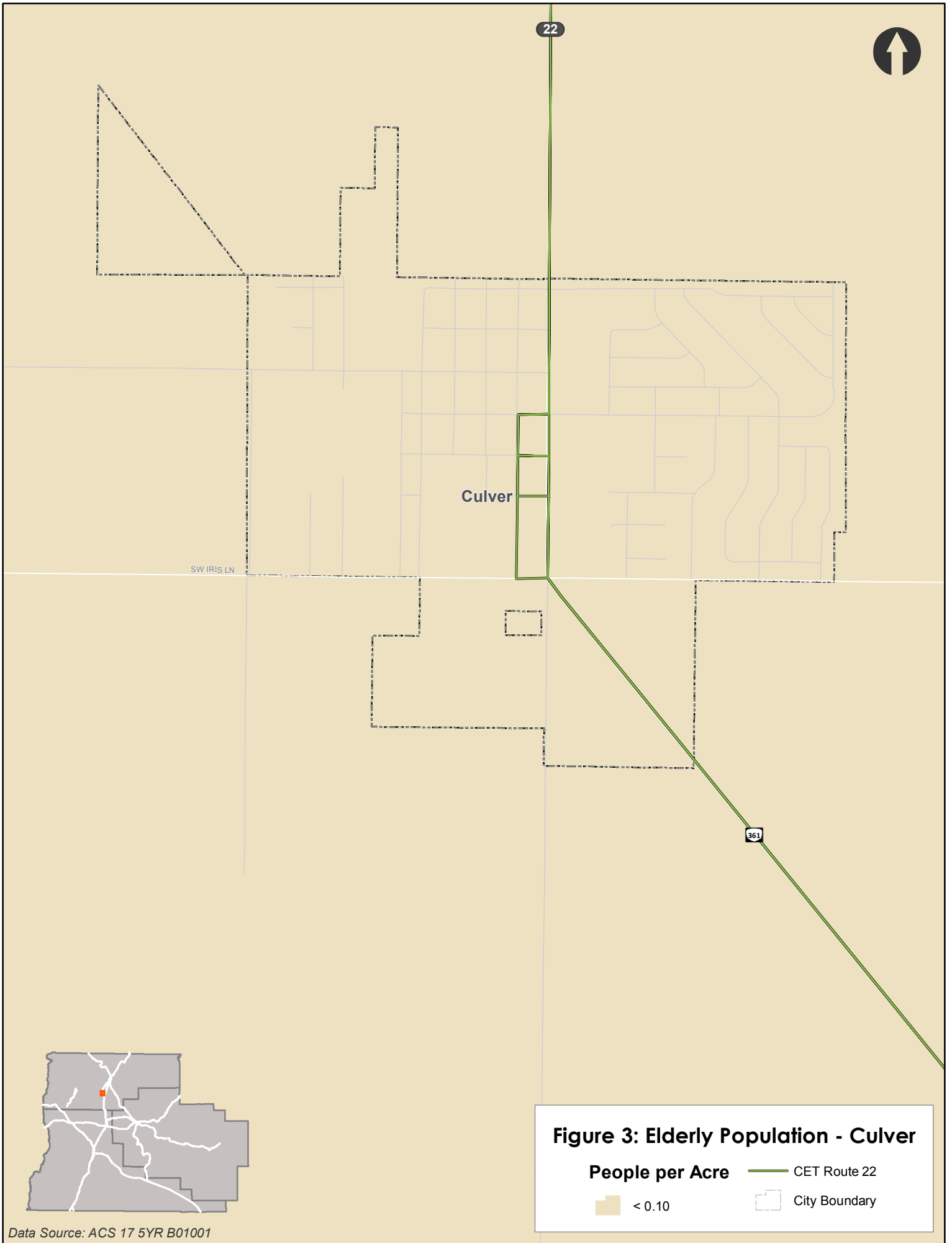
People per Acre

< 0.10

— CET Route 22

□ City Boundary

Data Source: ACS 17 5YR B01001



Data Source: ACS 17 5YR B01001

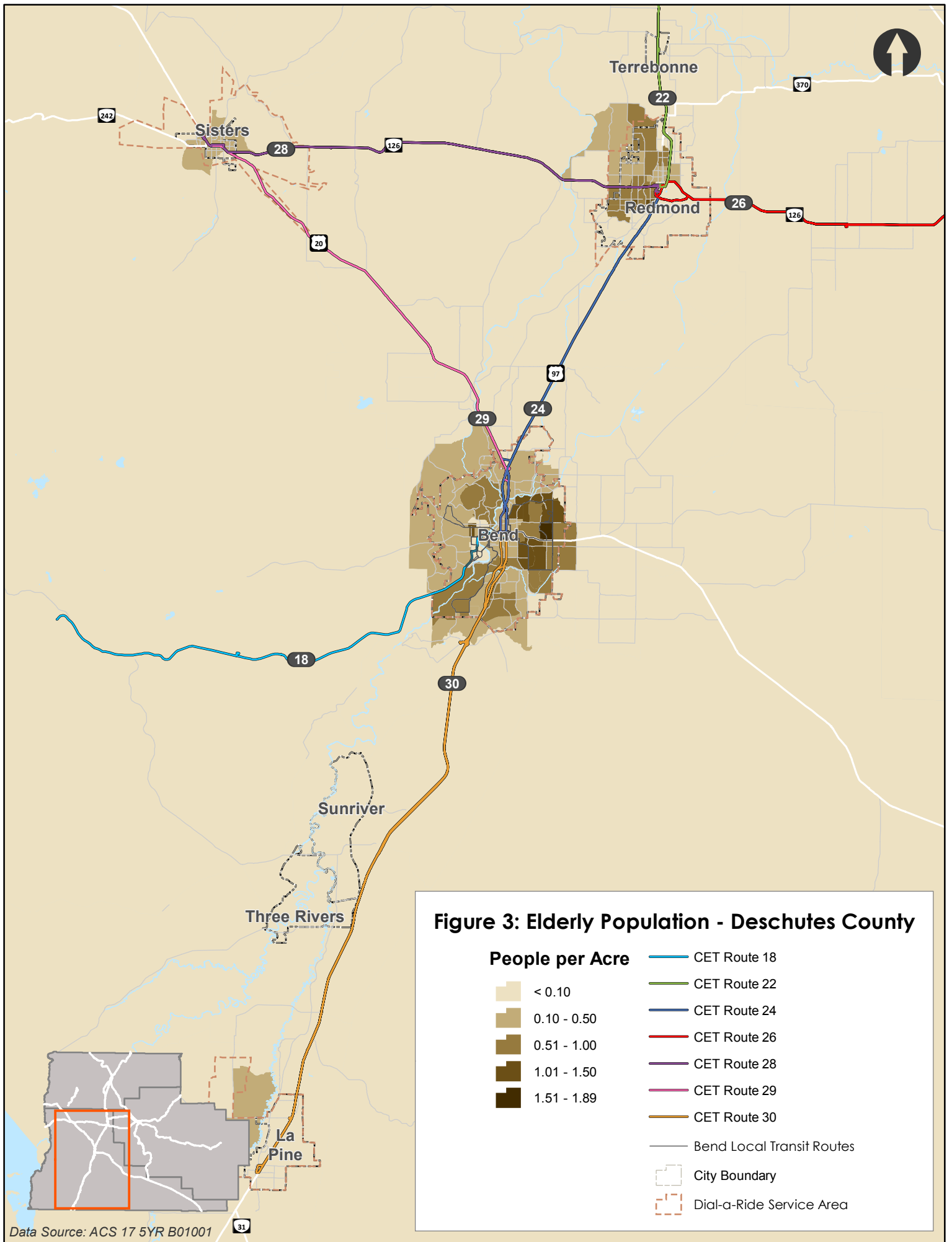
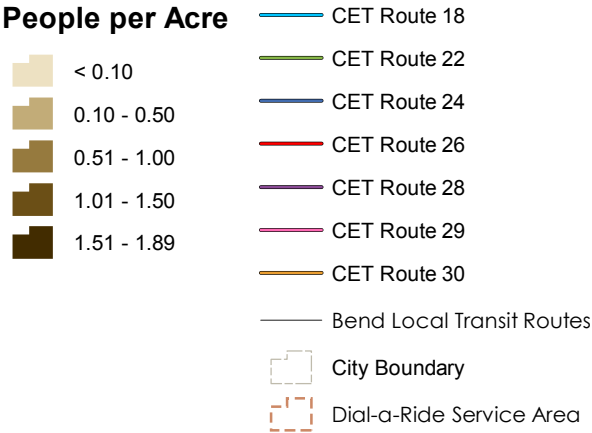


Figure 3: Elderly Population - Deschutes County



Data Source: ACS 17 5YR B01001

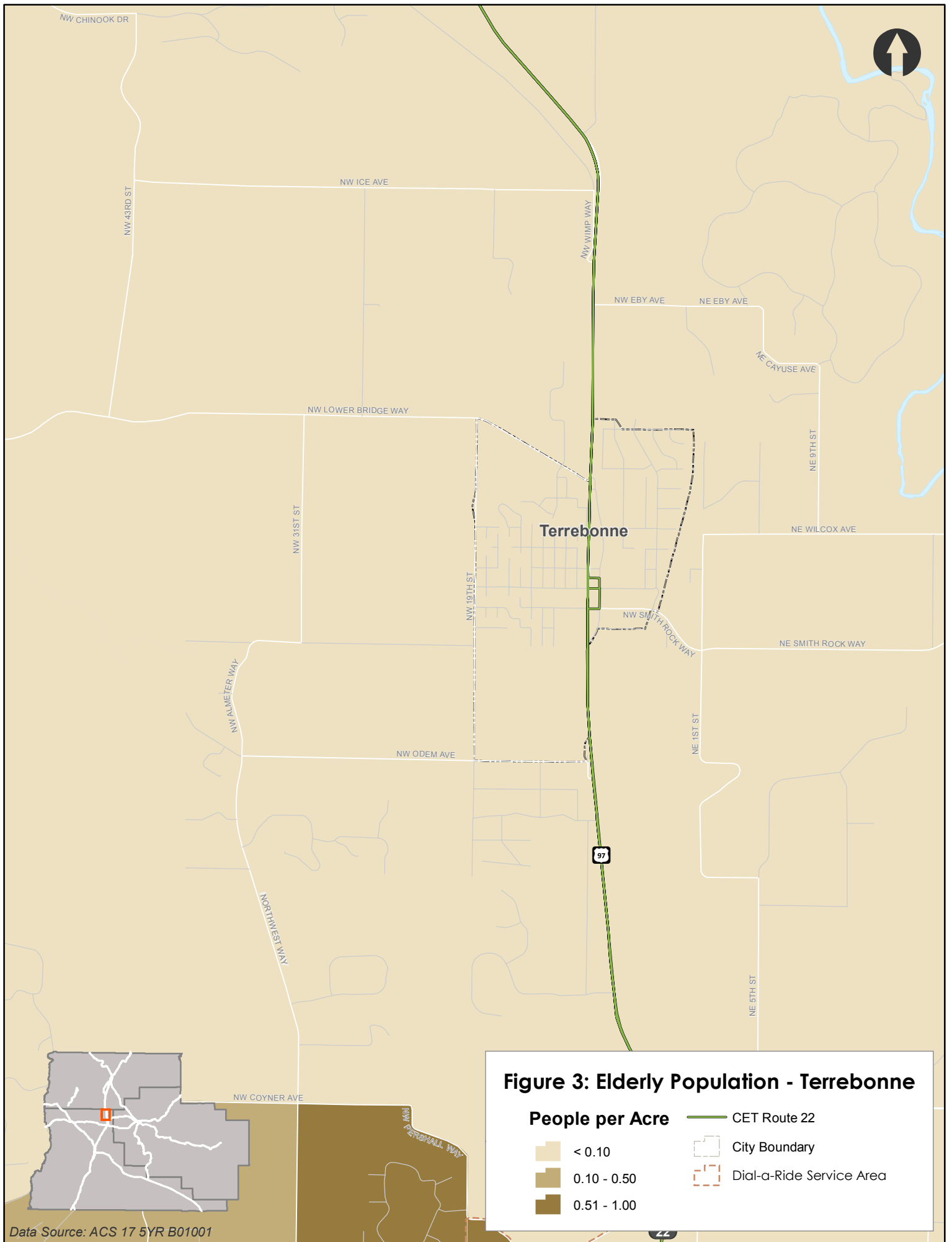


Figure 3: Elderly Population - Terrebonne

People per Acre

- < 0.10
- 0.10 - 0.50
- 0.51 - 1.00

- CET Route 22
- City Boundary
- Dial-a-Ride Service Area

Data Source: ACS 17 5YR B01001

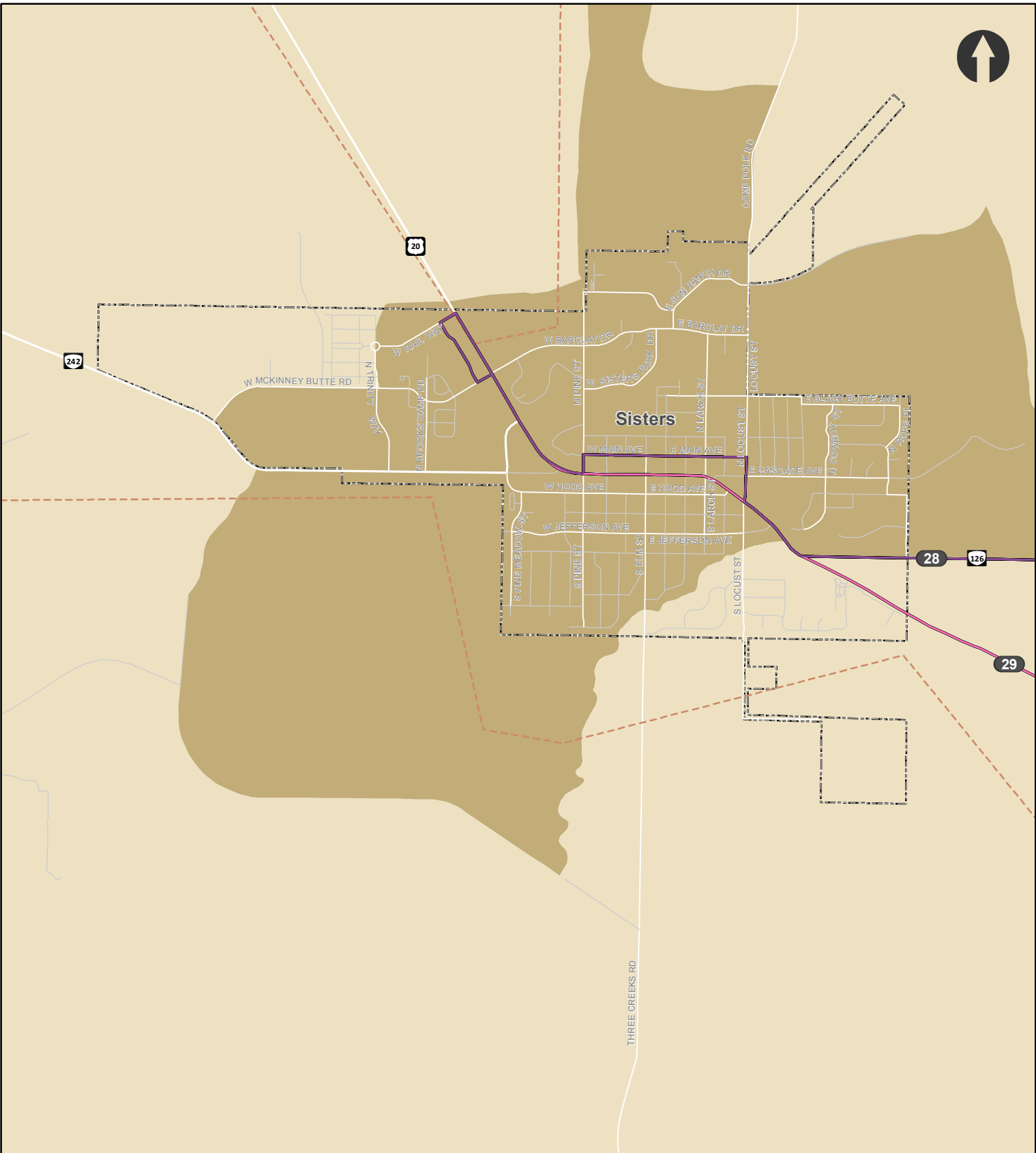
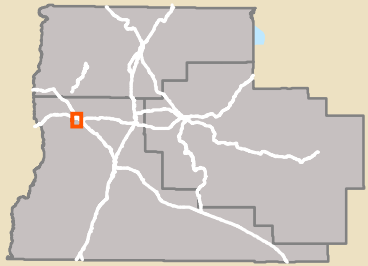


Figure 3: Elderly Population - Sisters

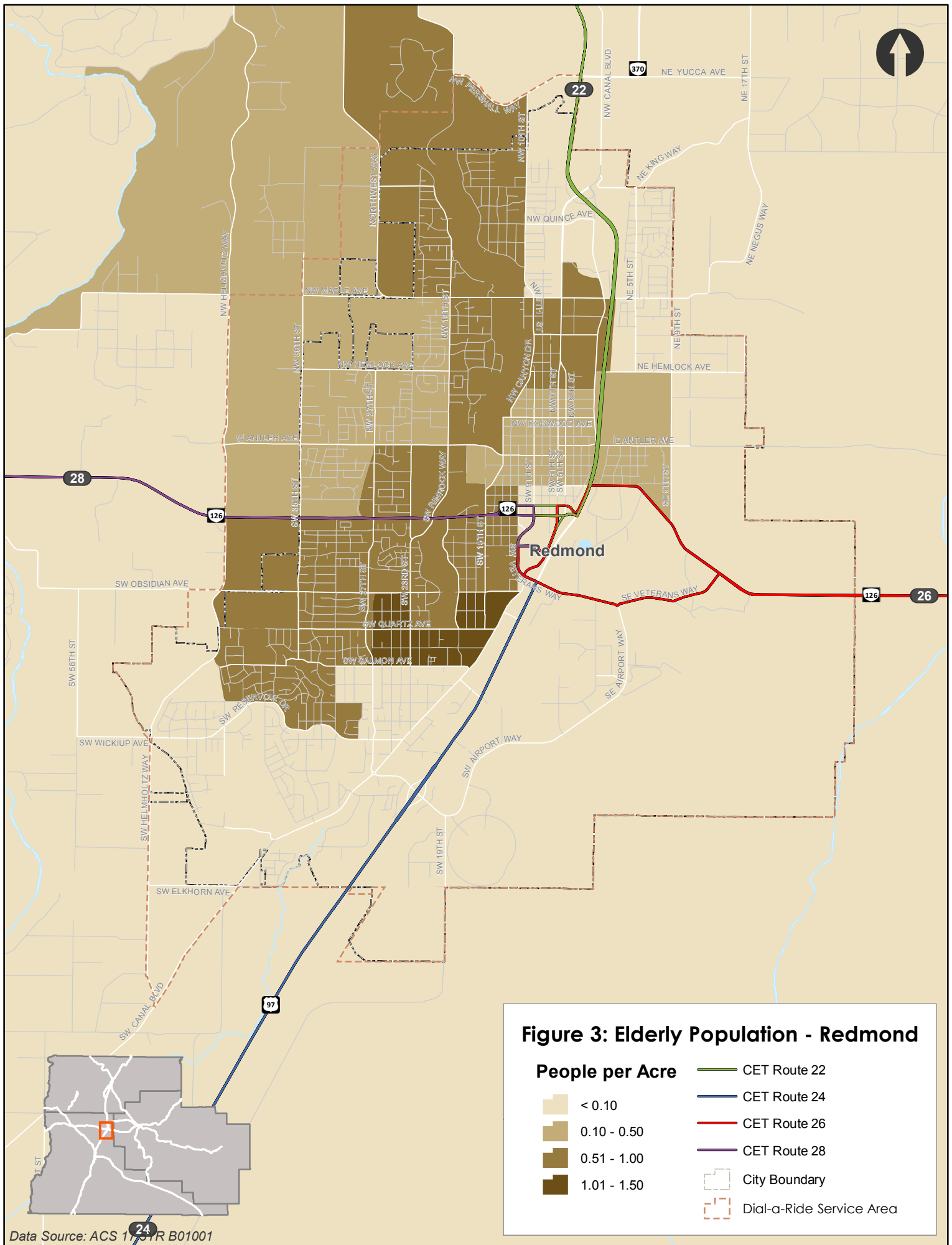
People per Acre

- < 0.10
- 0.10 - 0.50

- CET Route 28
- CET Route 29
- City Boundary
- Dial-a-Ride Service Area



Data Source: ACS 17 5YR B01001



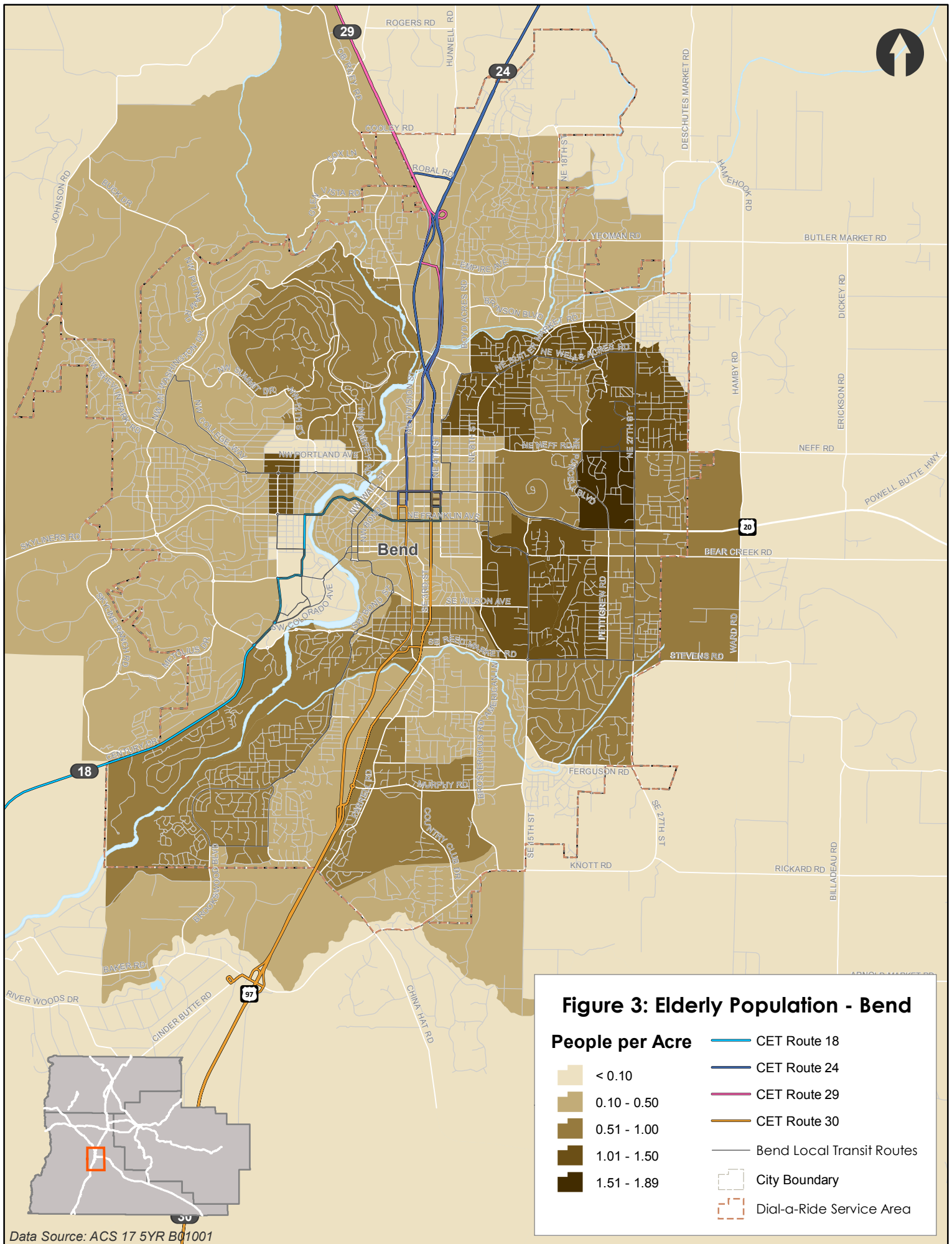


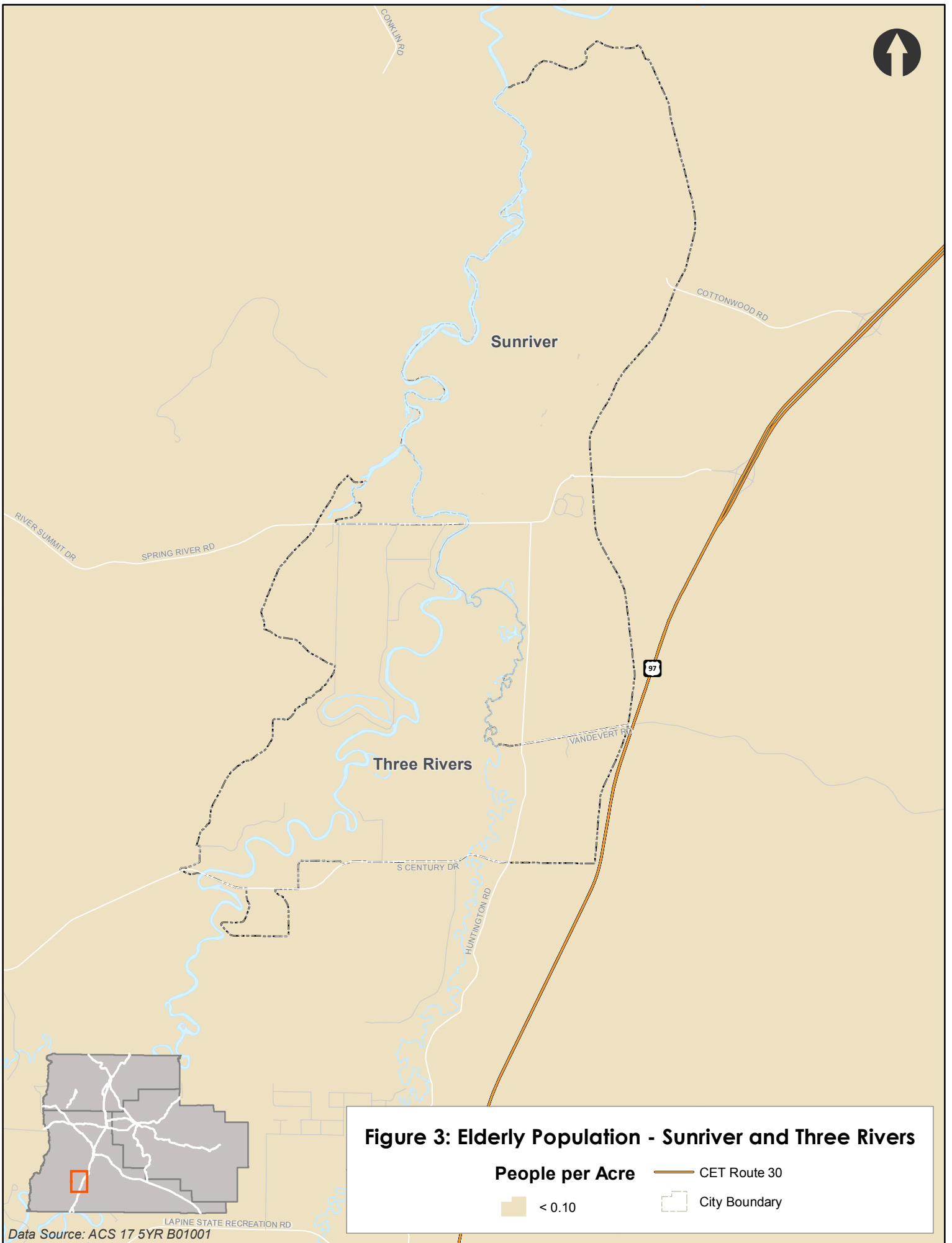
Figure 3: Elderly Population - Bend

People per Acre

- < 0.10
- 0.10 - 0.50
- 0.51 - 1.00
- 1.01 - 1.50
- 1.51 - 1.89

- CET Route 18
- CET Route 24
- CET Route 29
- CET Route 30
- Bend Local Transit Routes
- City Boundary
- Dial-a-Ride Service Area

Data Source: ACS 17 5YR B01001



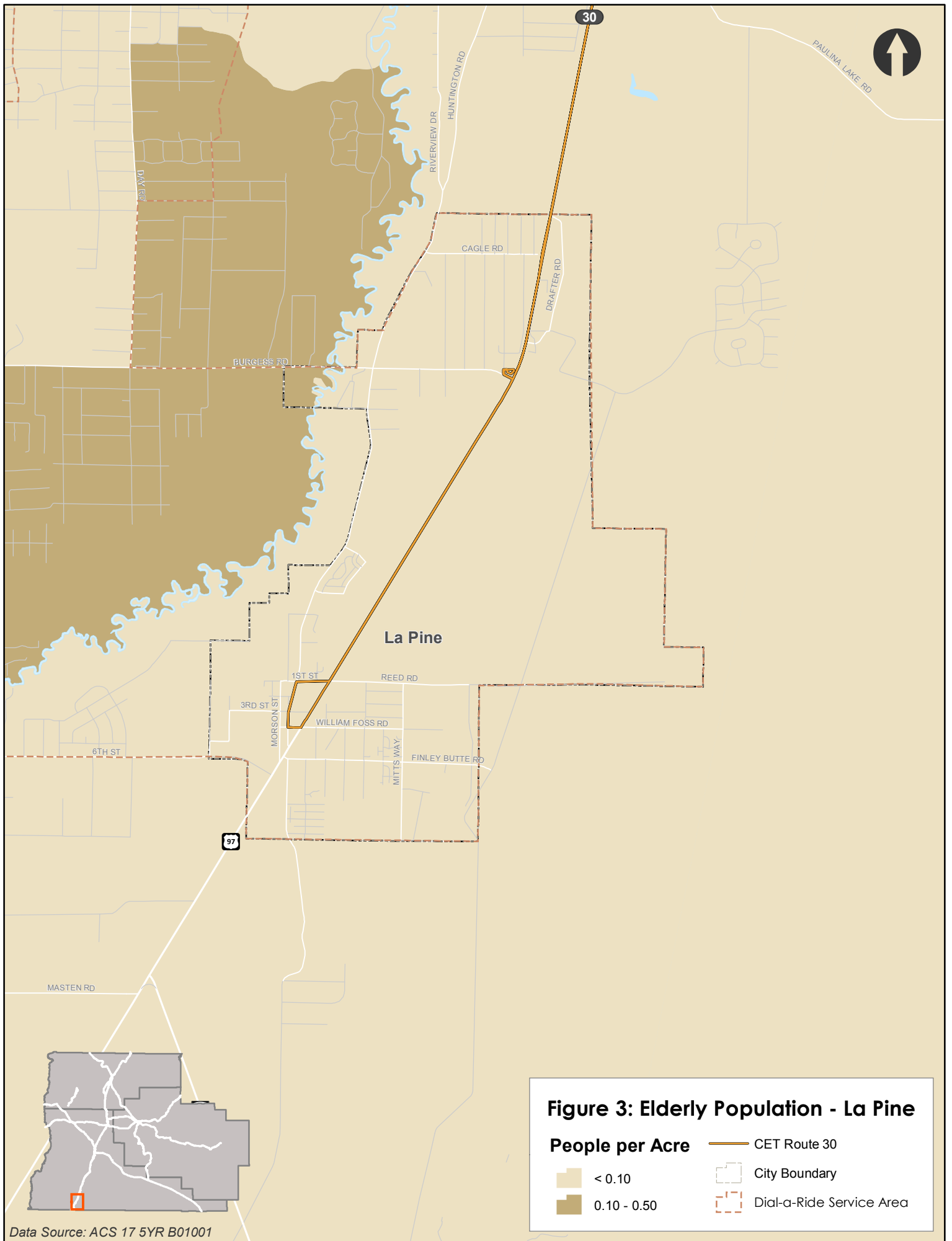


Figure 3: Elderly Population - La Pine

- | | |
|------------------------|--------------------------|
| People per Acre | CET Route 30 |
| < 0.10 | City Boundary |
| 0.10 - 0.50 | Dial-a-Ride Service Area |

Data Source: ACS 17 5YR B01001

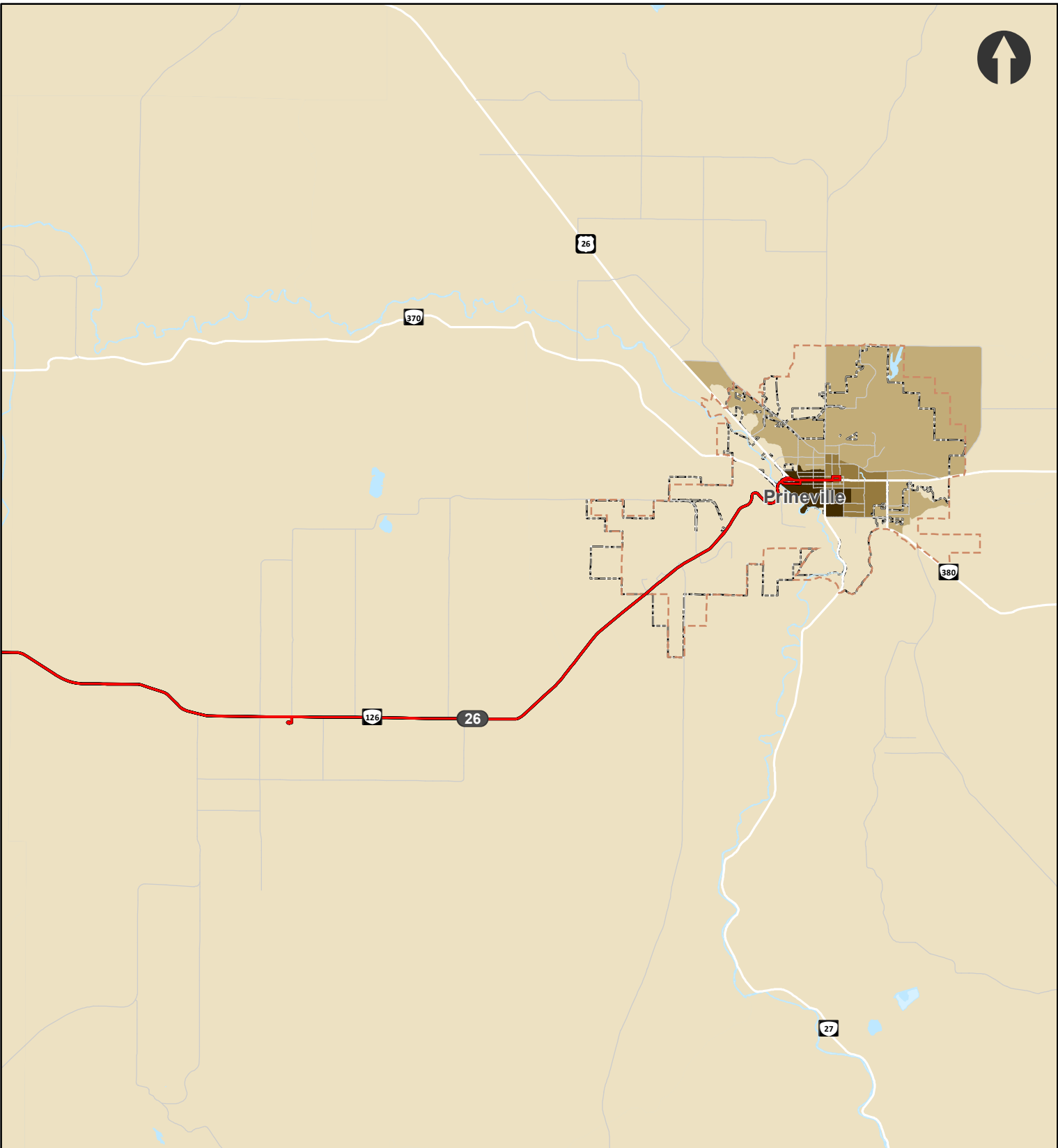







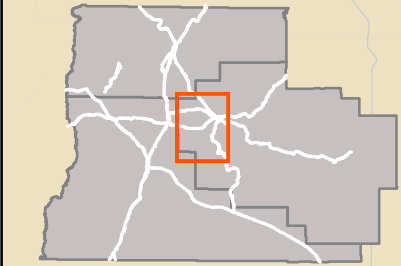


Figure 3: Elderly Population - Crook County

- | | | | |
|---|-------------|---|--------------------------|
|  | < 0.10 |  | CET Route 26 |
|  | 0.10 - 0.50 |  | City Boundary |
|  | 0.51 - 1.00 |  | Dial-a-Ride Service Area |
|  | 1.51 - 1.89 | | |



Data Source: ACS 17 5YR B01001

