

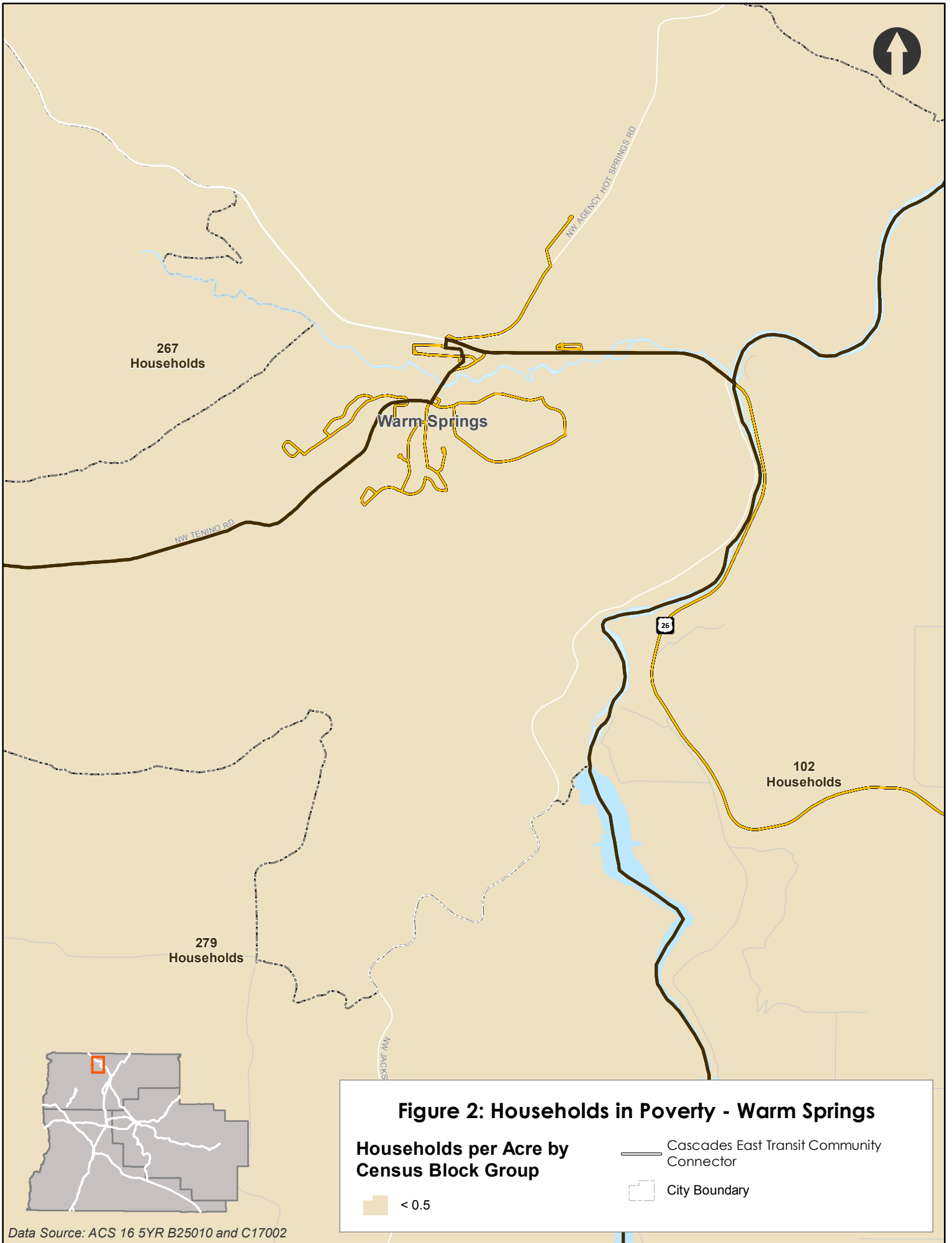
**Figure 2: Households in Poverty - Jefferson County**

**Households per Acre by Census Block Group**

- < 0.5
- 0.50 - 1.00

- Cascades East Transit Community Connector
- Dial-a-Ride Service Area
- City Boundary

Data Source: ACS 10 5YR B25010 and C17002



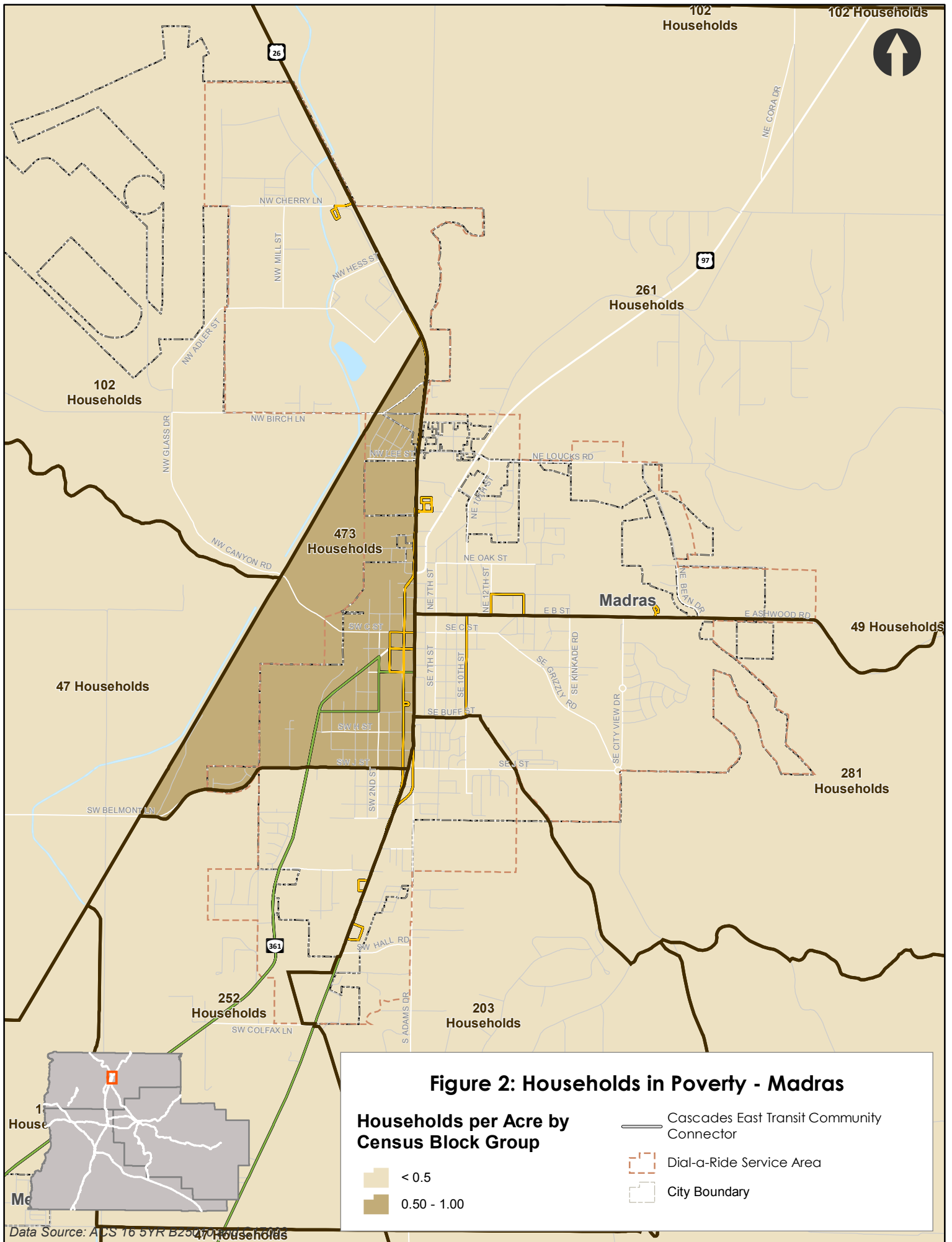
**Figure 2: Households in Poverty - Warm Springs**

**Households per Acre by Census Block Group**

< 0.5

- Cascades East Transit Community Connector
- City Boundary

Data Source: ACS 16 5YR B25010 and C17002



**Figure 2: Households in Poverty - Madras**

**Households per Acre by Census Block Group**

- < 0.5
- 0.50 - 1.00

- Cascades East Transit Community Connector
- Dial-a-Ride Service Area
- City Boundary

Data Source: ACS 16 5YR B25047



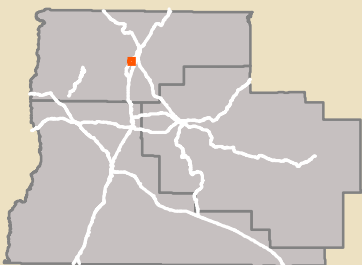
47 Households

Metolius

187 Households

361


SW EUREKA LN




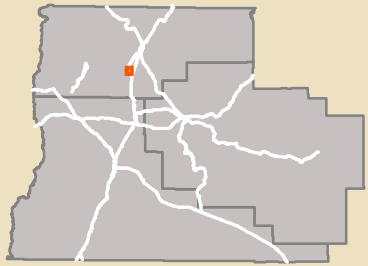
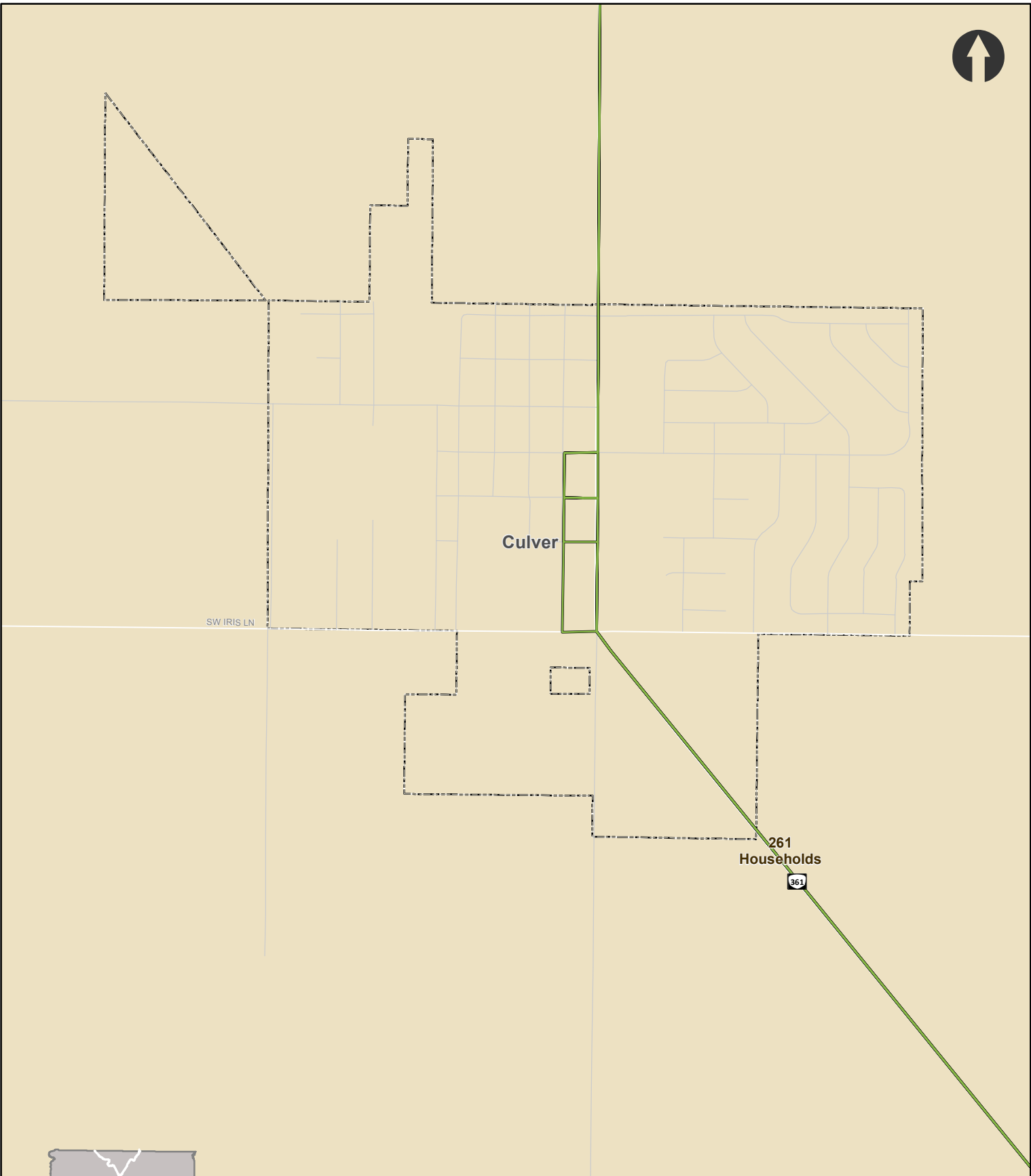
**Figure 2: Households in Poverty - Metolius**

**Households per Acre by  
Census Block Group**

 < 0.5

 Cascades East Transit Community Connector

 City Boundary

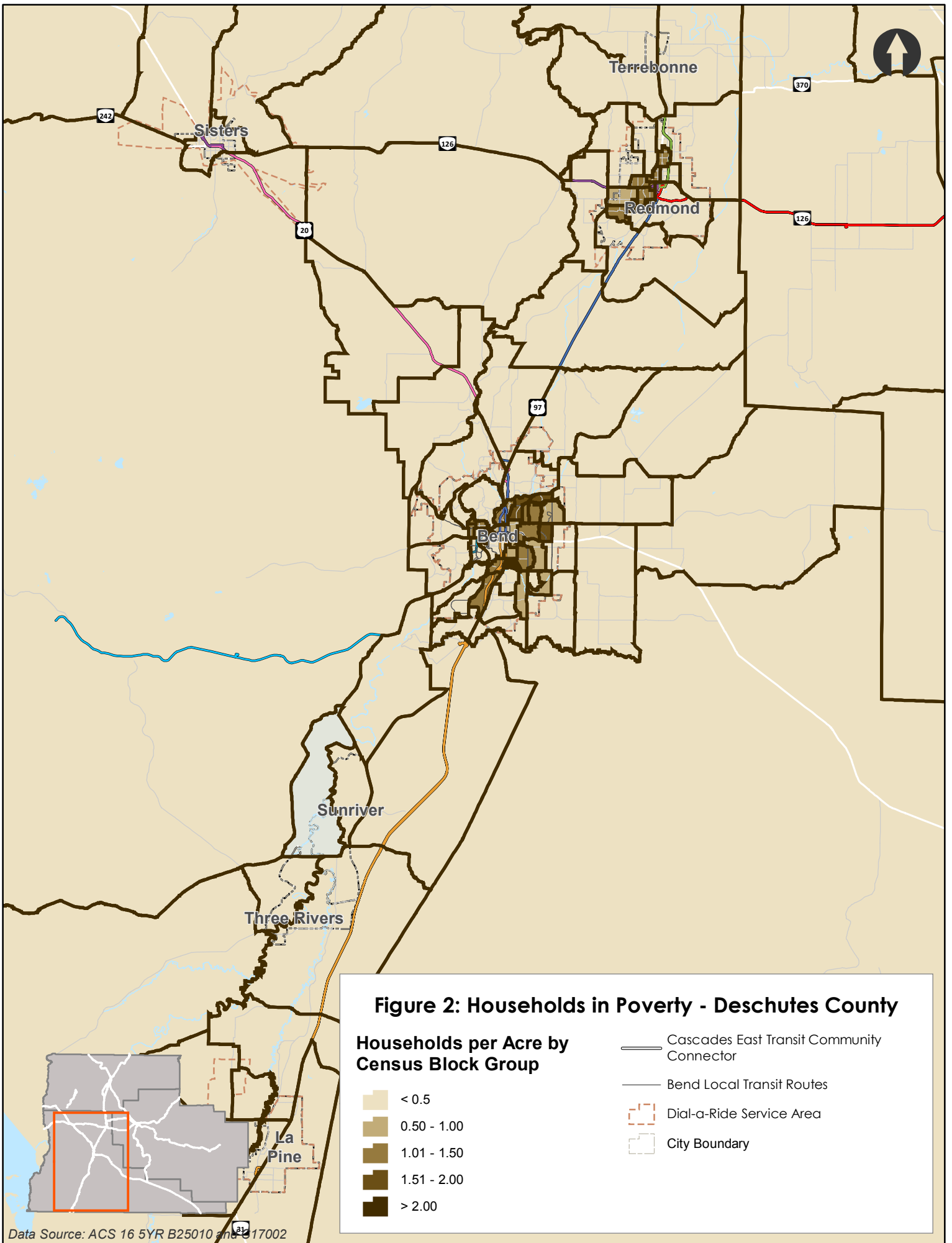


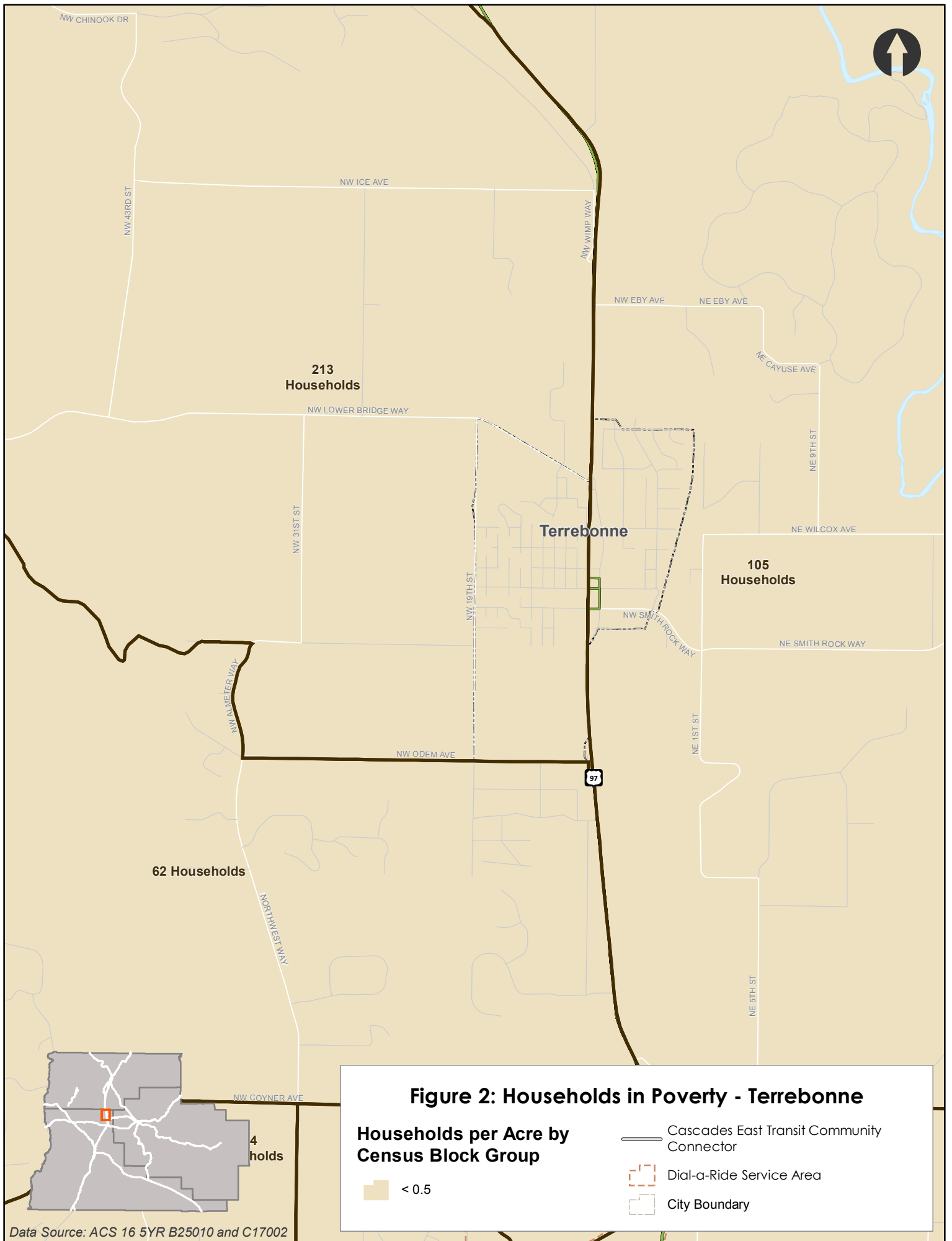
**Figure 2: Households in Poverty - Culver**

**Households per Acre by Census Block Group**

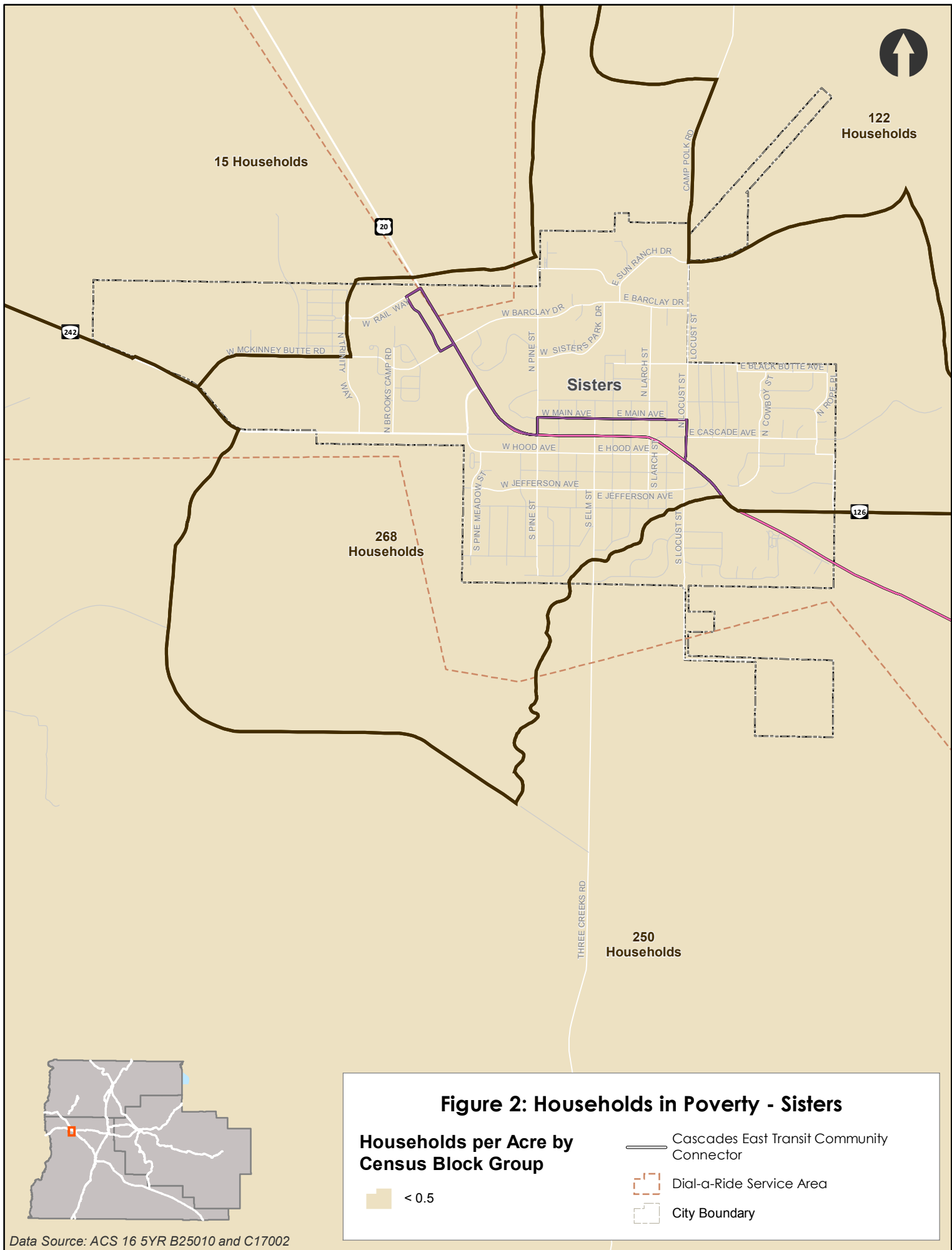
- < 0.5
- Cascades East Transit Community Connector
- City Boundary

Data Source: ACS 16 5YR B25010 and C17002



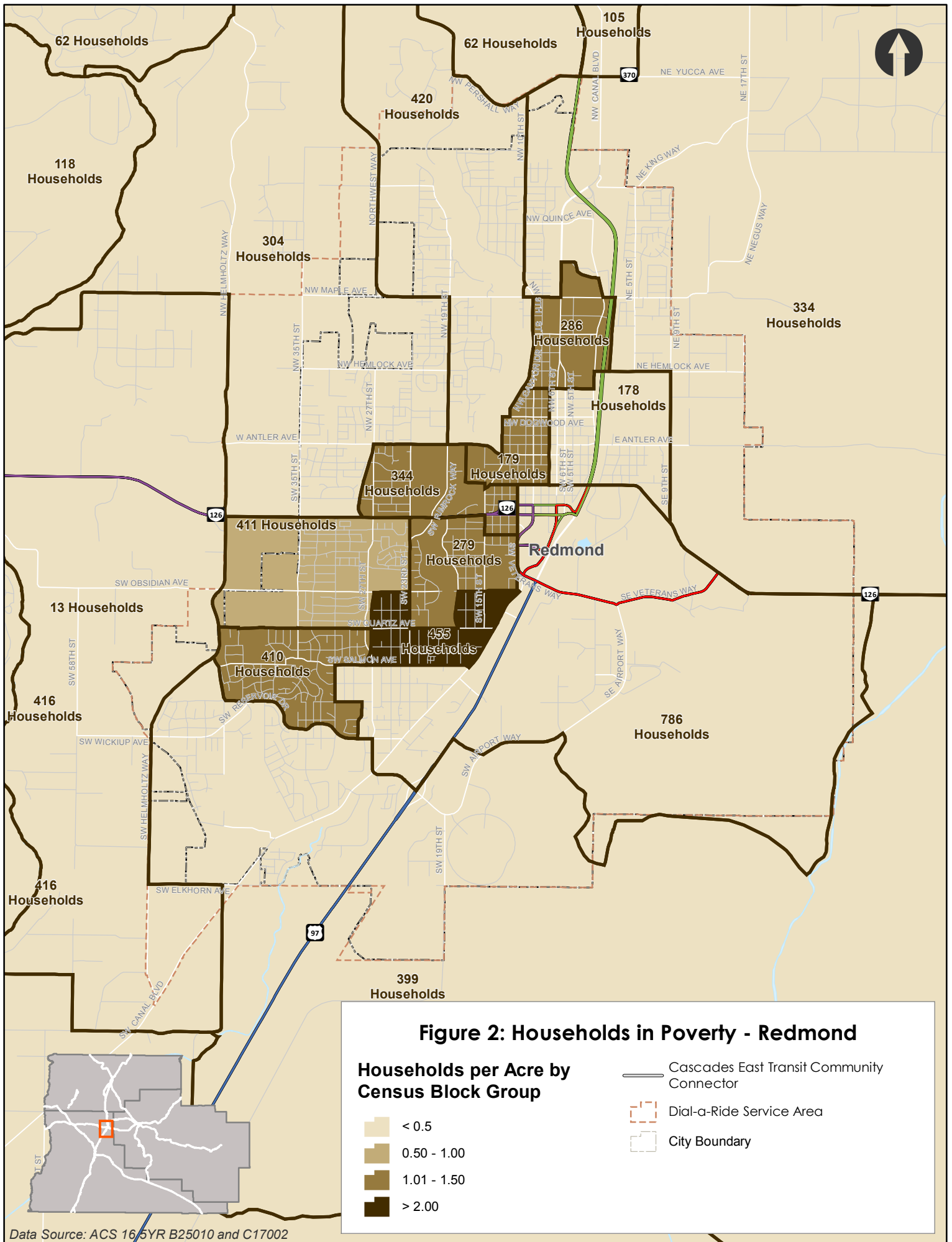


Data Source: ACS 16 5YR B25010 and C17002

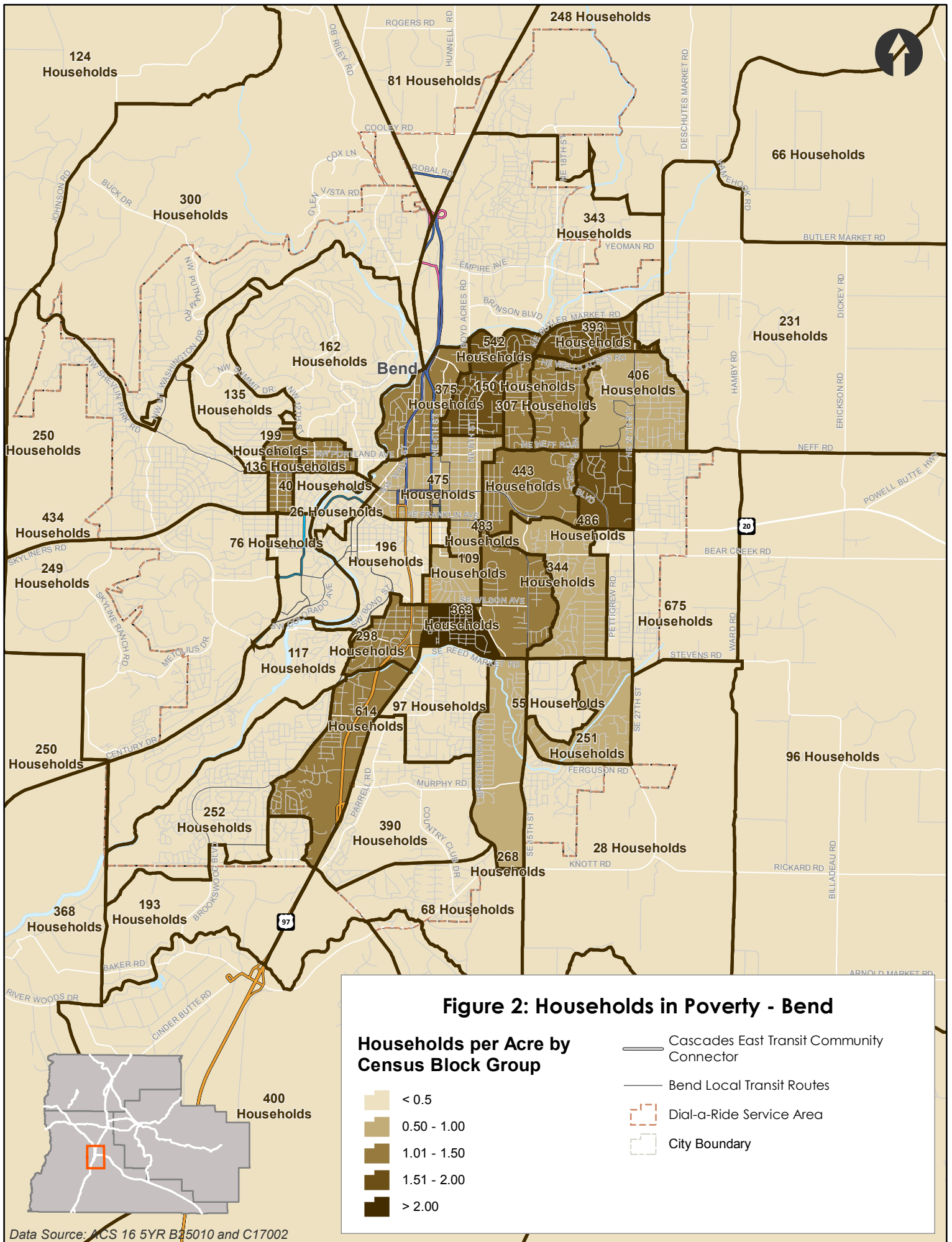


Data Source: ACS 16 5YR B25010 and C17002

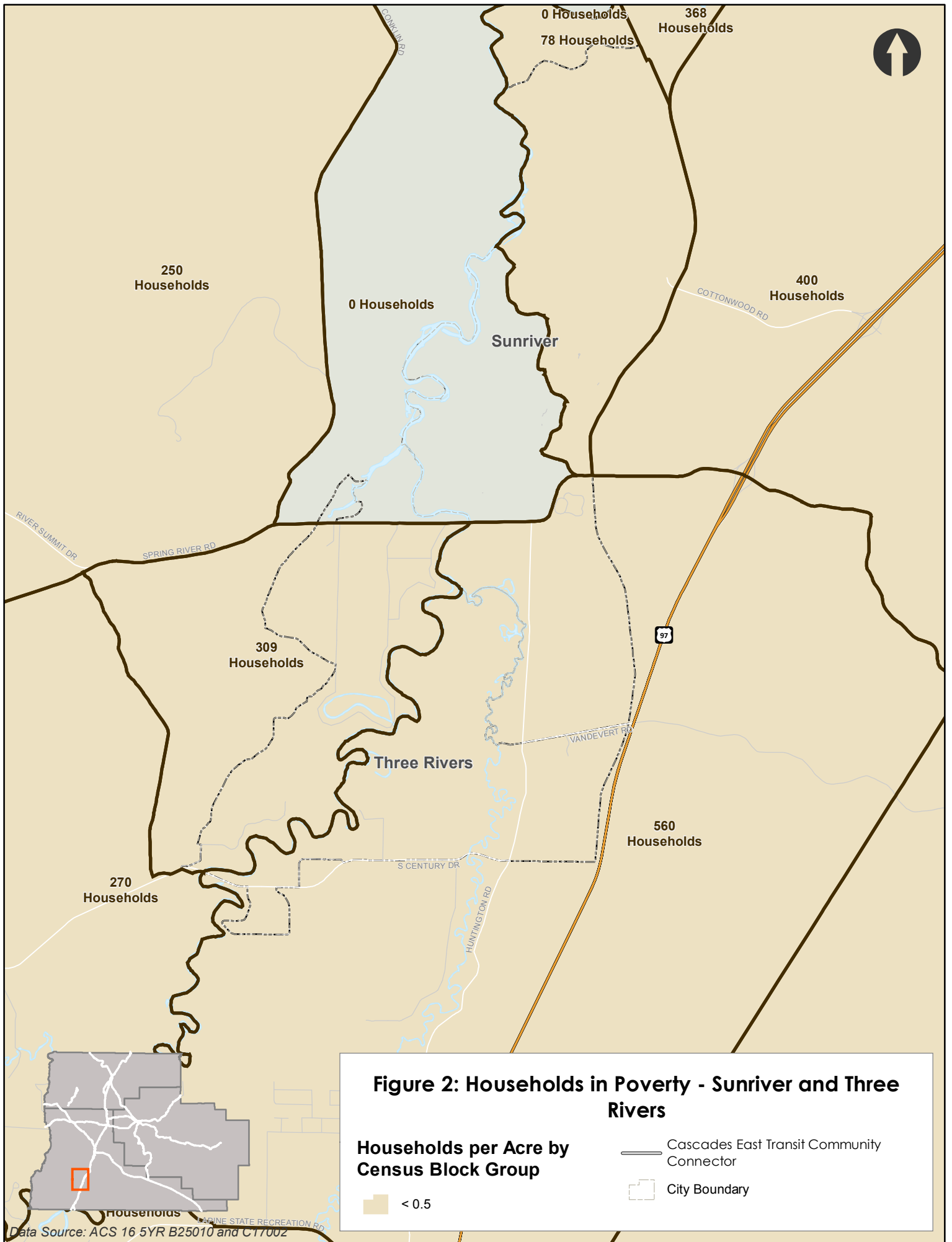


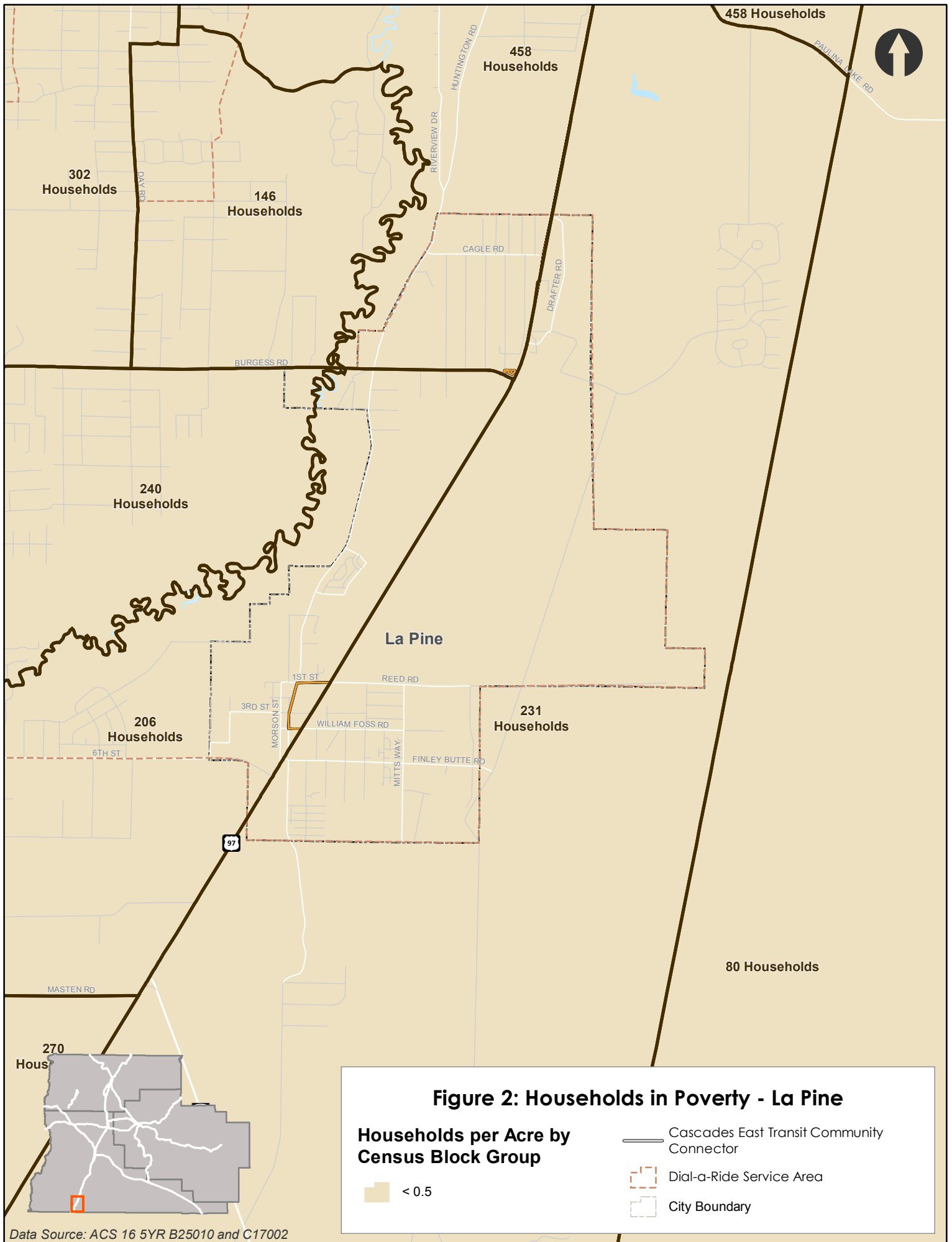


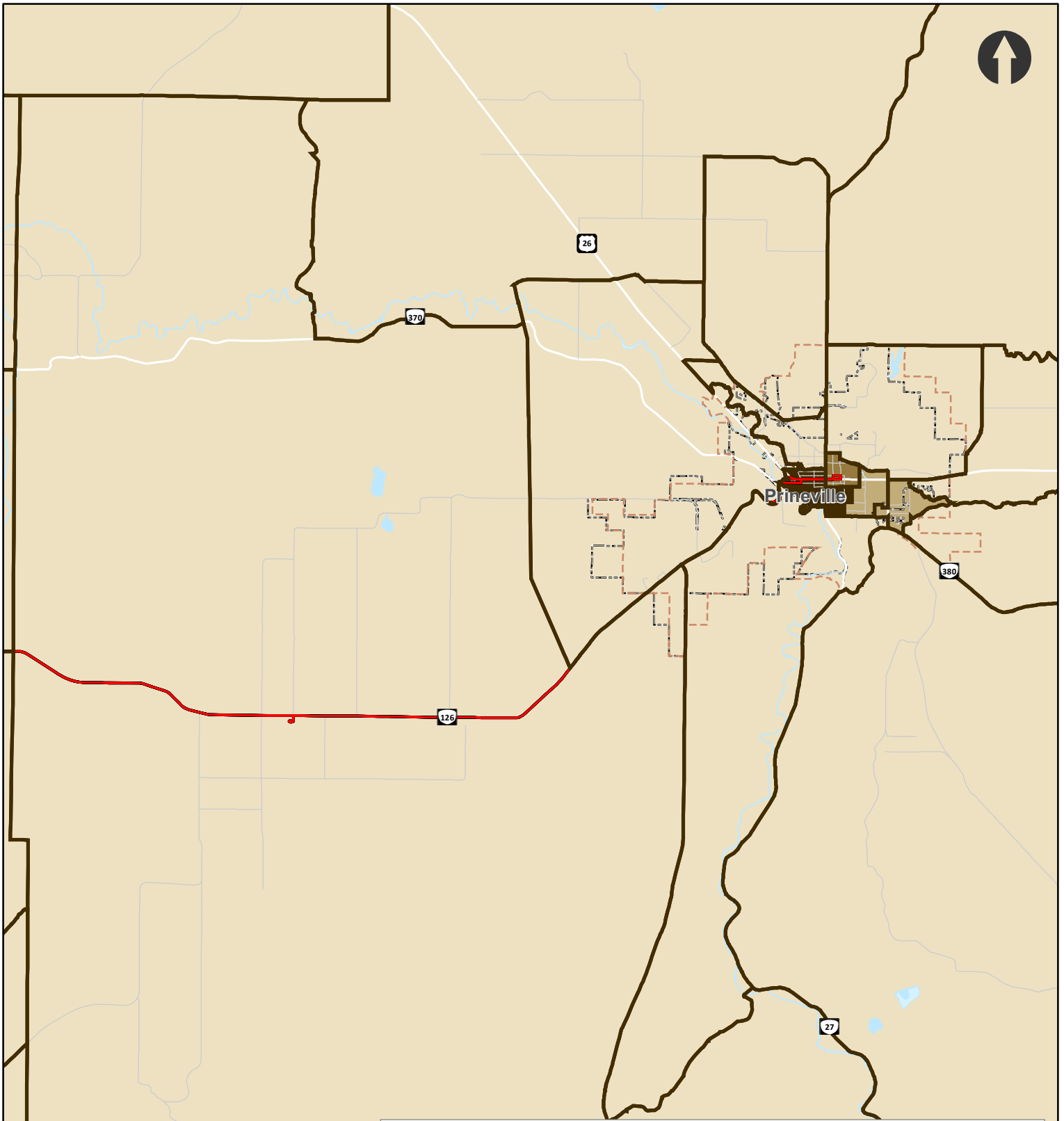
Data Source: ACS 16 5YR B25010 and C17002



Data Source: ACS 16 5YR B25010 and C17002







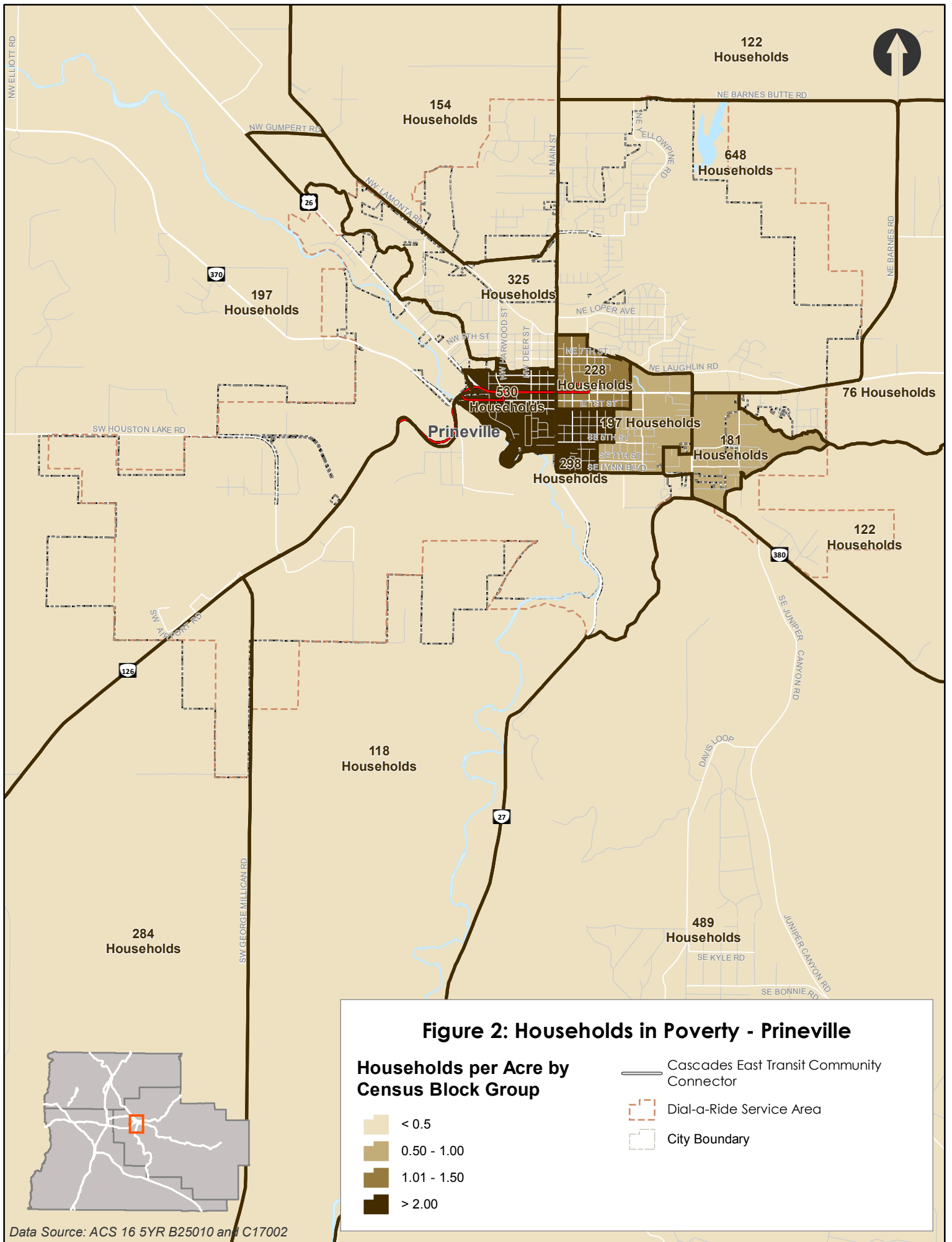
**Figure 2: Households in Poverty - Crook County**

**Households per Acre by Census Block Group**

- < 0.5
- 0.50 - 1.00
- 1.01 - 1.50
- > 2.00

- Cascades East Transit Community Connector
- Dial-a-Ride Service Area
- City Boundary

Data Source: ACS 16 5YR B25010 and C17002



**Figure 2: Households in Poverty - Prineville**

**Households per Acre by Census Block Group**

- < 0.5
- 0.50 - 1.00
- 1.01 - 1.50
- > 2.00

- Cascades East Transit Community Connector
- Dial-a-Ride Service Area
- City Boundary

Data Source: ACS 16 5YR B25010 and C17002